



SML Government Degree College Yemmiganur

STUDENT SATISFACTION SURVEY 2021-2022



NAAC

Participate in Student Satisfaction Survey (SSS) by NAAC

Dear Students,

NAAC (National Assessment and Accreditation Council) has endeavoured to conduct a **Student Satisfaction Survey (SSS)** the results of which will encompass the accreditation process. The Survey will capture student responses from the list of students provided by the Higher Education Institutes (HEIs). This survey is conducted directly by NAAC to give an opportunity to the students to have their say in assessment and quality improvement process.

NAAC will send online link of the survey to the email address of the student provided by the HEIs, and the student will have to complete and submit the survey in a stipulated time.

Have
your say
in quality
improvement



• Rate your Institution

The questionnaire is based on the Likert type scale that means the students will have to give responses on a scale of 0 to 4, with the most positive response being rated as 4 and the most negative response being rated as 0. Analysis of the survey is done using software which will aggregate the responses and generate the score of Student Satisfaction Survey which is important Key Indicator in overall grade of institution.

• Suggest Improvements

In SSS, twenty of the twenty one questions will be objective in nature, while one question is open ended to elicit observations and suggestions for improvements thereby providing an opportunity to the student to give suggestions and criticisms in their own words. The questionnaire consists of several facets of the teaching learning process.

• Identity Not Disclosed

Students are randomly selected for the survey by system. Except particular student nobody will know which student has received the SSS email and what they have responded. Thus the students will remain anonymous throughout the process.

More details on survey are available on NAAC website <http://www.naac.gov.in/apply-now>

Student Survey has 30 to 60 weightage (as per type of institution) in the scoring of institutional Grade and hence responses from students can play a critical role in determining institutional grade. It is desired that active participation of students in survey will not only empower the students but also help institutions in continuous quality improvement through student engagement.



Student Satisfaction Survey:: 2021-22

Student Satisfaction Survey was conducted through a questionnaire consisting of twenty-one questions. Twenty questions are objective in nature, while one question is open ended to elicit observations and suggestions for improvements providing an opportunity to the student to give suggestions and criticisms in their own words. For the twenty objective questions, students responded on a Likert scale of 4 to 0, with the most positive response rated as 4 and most negative response rated as 0. The mean score for each question will be calculated and the overall mean will be arrived at. This figure will range from 4 to 0 and will give the mean satisfaction level of the students for the institute. This figure in the range of 4 to 0 will be the score of key indicators 'Student Satisfaction Survey'. 107 students (14.4%) out of total strength of 741 students participated in the survey.



SML Government Degree College, Yemmiganur.
Accredited with 'B' Grade by NAAC

The following questions are asked in the survey:

Student Satisfaction Survey :: 2021-22

Name of the College: SML GOVT.DEGREE COLLEGE Place:

YEMMIGANUR

AISHE CODE: C-26325

Name of the Teacher:	
Subject:	

Instructions to fill the questionnaire :

All questions should be compulsorily attempted.

- Each question has five responses, choose the most appropriate one.
- The response to the qualitative question no. 21 is an opportunity to give suggestions or improvements (Kindly restrict your response to teaching learning process only).

Questionnaire

Question	Your Response
1. How much of the syllabus was covered by the teacher?	
4 – 85 to 100% 3 – 70 to 84% 2 – 55 to 69% 1– 30 to 54% 0 –Below 30%	
2. How well did your teacher prepare for the classes?	
4 –Thoroughly 3 – Satisfactorily 2 – Poorly 1 – Indifferently 0 – Won't teach at all	
3. How well is the teacher able to communicate?	
4 – Always effective 3 – Sometimes effective 2 – Just satisfactorily 1– Generally ineffective 0– Very poor communication	
4. The teacher's approach to teaching can best be described as	
4– Excellent 3 – Very good 2 – Good 1 – Fair 0– Poor	

5. Fairness of the internal evaluation process by the teacher	
4 – Always fair 3 – Usually fair 2 – Sometimes unfair 1 – Usually unfair 0– Unfair	
6. Was your performance in assignments discussed with you?	
4 – Every time 3 – Usually 2 – Occasionally/Sometimes 1 – Rarely 0– Never	
7. The teacher takes active interest in arranging field visits for students.	
4 – Regularly 3 – Often 2 – Sometimes 1 – Rarely 0– Never	
8. The teaching process in the class room facilitates you in cognitive, social and emotional growth.	
4 – Significantly 3 – Very well 2 – Moderately 1 – Marginally 0– Not at all	
9. The teacher provides multiple opportunities to learn and grow.	
4 – Strongly agree 3 – Agree 2 – Neutral 1 – Disagree 0– Strongly disagree	
10. The teacher informs you about your expected competencies, course outcomes and programme outcomes.	
4 – Every time 3 – Usually 2– Occasionally/Sometimes 1 – Rarely 0– Never	
11. Your teacher does a necessary follow-up with an assigned task to you.	
4 – Every time 3 – Usually 2 – Occasionally/Sometimes 1 – Rarely 0 – Never	
12. The teacher illustrates the concepts through examples and applications.	
4 – Every time 3 – Usually 2 – Occasionally/Sometimes 1– Rarely 0 – Never	
13. The teacher identifies your strengths and encourage you with providing right level of challenges.	

<p>4 – Fully 3 – Reasonably 2 – Partially 1 – Slightly 0– Unable to</p>	
14. Teacher is able to identify your weaknesses and help you to overcome them.	
<p>4 – Every time 3 – Usually 2 – Occasionally/Sometimes 1 – Rarely 0 – Never</p>	
15. The teacher makes effort to engage students in the monitoring, review and continuous quality improvement of the teaching learning process.	
<p>4 – Strongly agree 3 – Agree 2 – Neutral 1 – Disagree 0 – Strongly disagree</p>	
16. The teacher uses the student centric methods, such as experiential learning, participative learning and problem solving for enhancing learning experiences.	
<p>4 – To a great extent 3 – Moderate 2 – Some what 1 – Very little 0 – Not at all</p>	
17. The teacher encourages you to participate in extracurricular activities.	
<p>4 – Strongly agree 3 – Agree 2 – Neutral 1 – Disagree 0 – Strongly disagree</p>	
18. Efforts are made by the teacher to inculcate soft skills, life skills and employability skills to make you ready for the world of work.	
<p>4 – To a great extent 3 – Moderate 2 – Some what 1 – Very little 0 – Not at all</p>	
19. The teacher uses ICT tools such as LCD projector, Multimedia, etc. while teaching.	
<p>4 – Above 90% 3 – 70 – 89% 2 – 50 – 69% 1 – 30 – 49% 0 – Below 29%</p>	
20. The overall quality of teaching-learning process in the class is very good.	
<p>4 –Strongly agree 3 – Agree 2 – Neutral 1 – Disagree 0 – Strongly disagree</p>	

21. Give three observations/suggestions to improve the overall teaching – learning experience in the class with reference to the teacher.

a)

b)

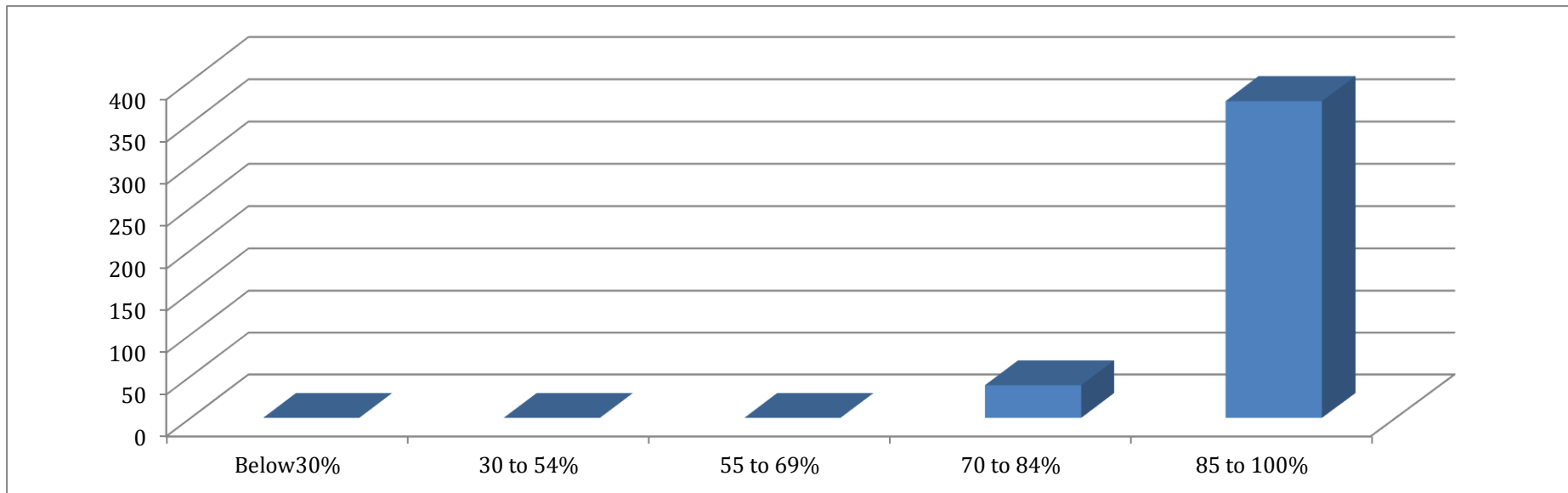
c)

OVERALL MEAN SCORE OF RESPONSES: 3.6/4

RESPONSES:

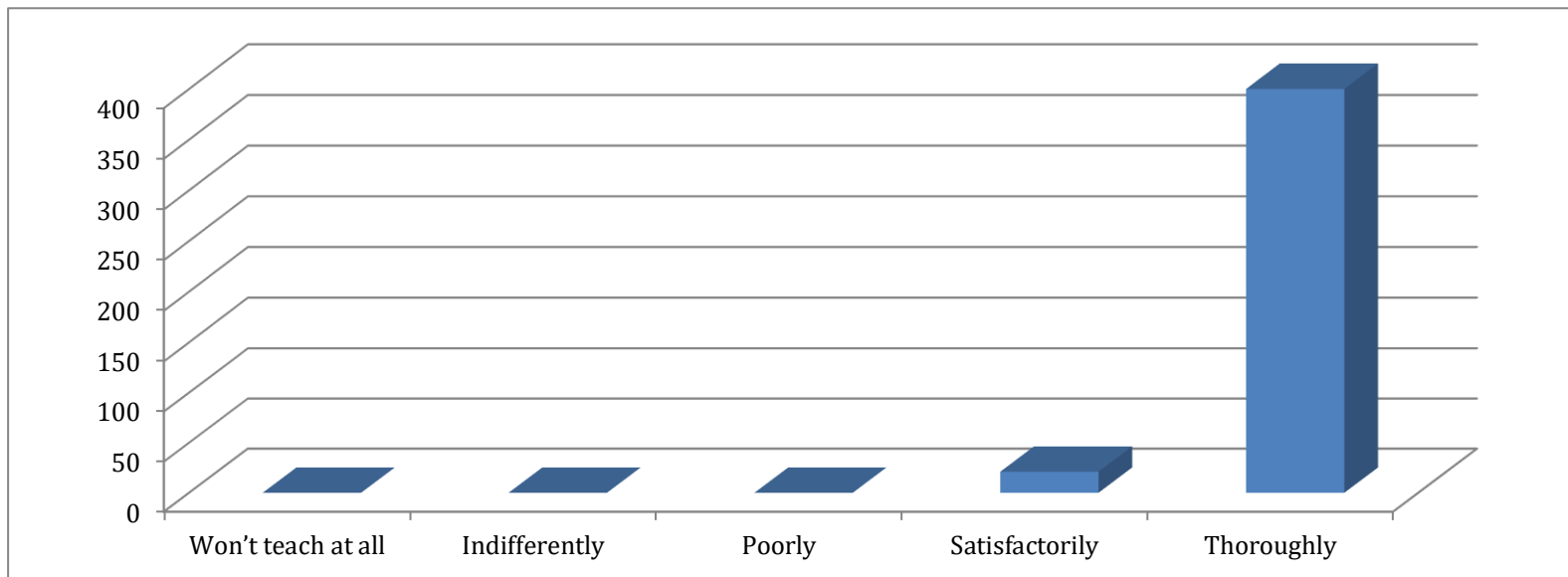
1. How much of the syllabus was covered in the class?

Sentiment Level	Responses (a)	Rating Value (b)	Total Score $C=(a)*(b)$
Below30%	0	0	0
30 to 54%	0	1	0
55 to 69%	0	2	0
70 to 84%	13	3	39
85 to 100%	94	4	376
Total Responses / Respondents	107		415
Mean Score			3.8785



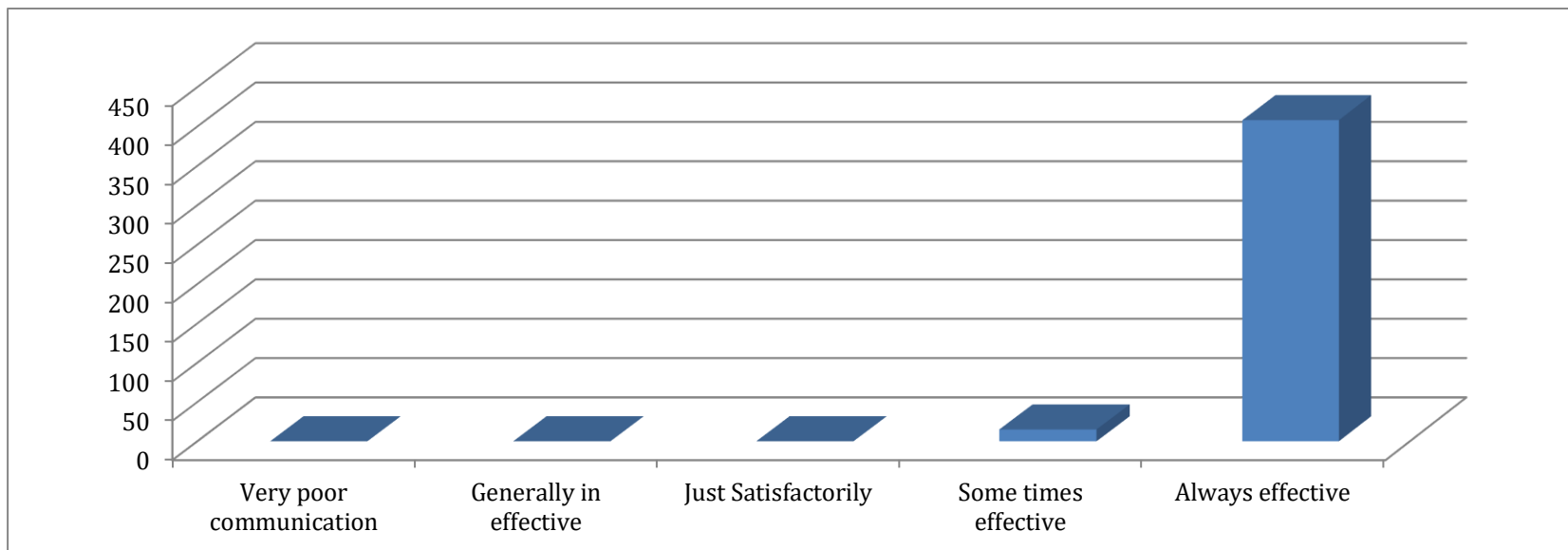
2. How well did the teachers prepare for the classes?

Sentiment Level	Responses (a)	Rating Value (b)	Total Score C=(a)*(b)
Won't teach at all	0	0	0
Indifferently	0	1	0
Poorly	0	2	0
Satisfactorily	7	3	21
Thoroughly	100	4	400
Total Responses/Respondents	107		421
Mean Score			3.9345



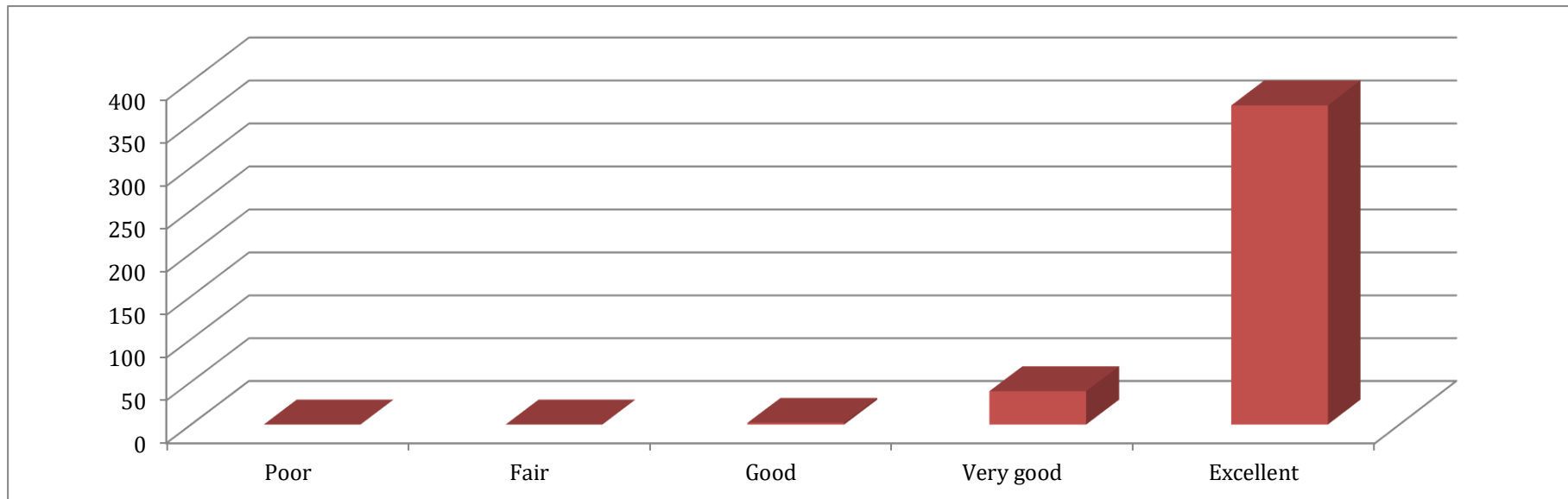
3. How well were the teachers able to communicate?

Sentiment Level	Responses (a)	Rating Value (b)	Total Score C=(a)*(b)
Very poor communication	0	0	0
Generally in effective	0	1	0
Just satisfactorily	0	2	0
Some times effective	5	3	15
Always effective	102	4	408
Total Responses/Respondents	107		423
Mean Score			3.9532



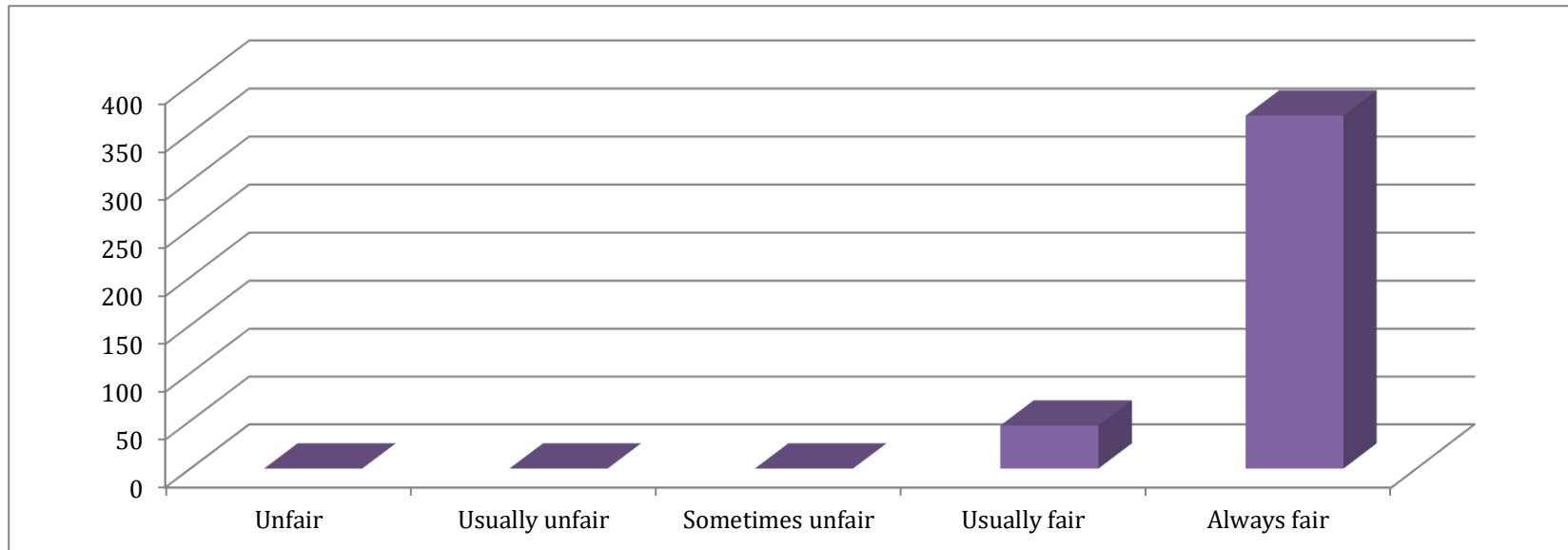
4.The teacher's approach to teaching can best be described as

Sentiment Level	Response (a)	Rating Value (b)	Total Score C=(a)* (b)
Poor	0	0	0
Fair	0	1	0
Good	1	2	2
Very good	13	3	39
Excellent	93	4	372
Total Responses/Respondents	107		413
Mean Score			3.8598



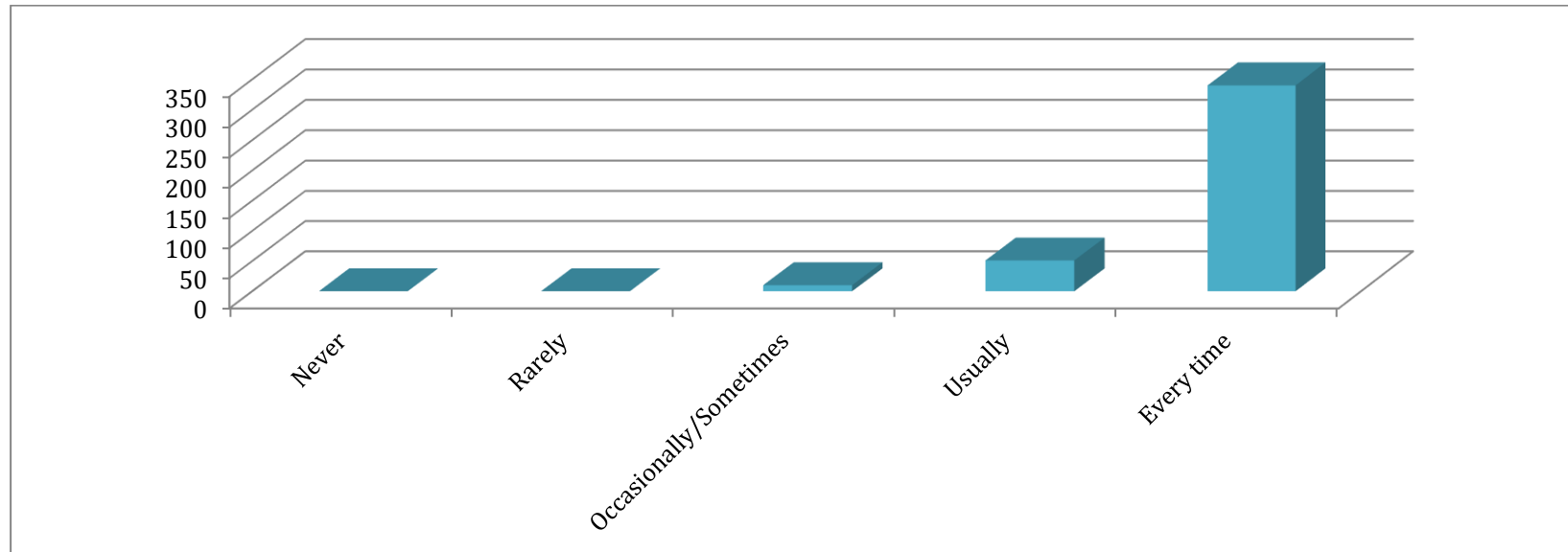
5. Fairness of the internal evaluation process by the teachers.

Sentiment Level	Responses (a)	Rating Value (b)	Total Score C=(a)* (b)
Unfair	0	0	0
Usually unfair	0	1	0
Sometimes unfair	0	2	0
Usually fair	15	3	45
Always fair	92	4	368
Total Responses / Respondents	107		413
Mean Score			3.8598



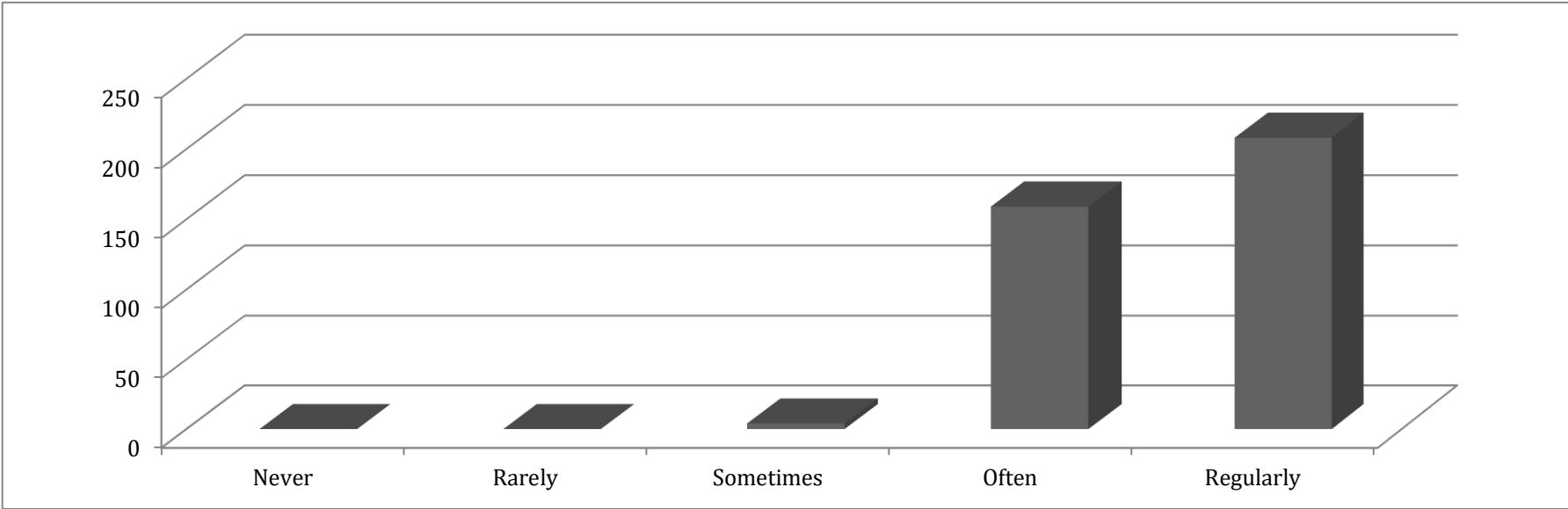
6. Was your performance in assignments discussed with you?

Sentiment Level	Responses (a)	Rating Value (b)	Total Score C=(a)* (b)
Never	0	0	0
Rarely	0	1	0
Occasionally/Sometimes	5	2	10
Usually	17	3	51
Every time	85	4	340
Total Responses / Respondents	107		401
Mean Score			3.7476

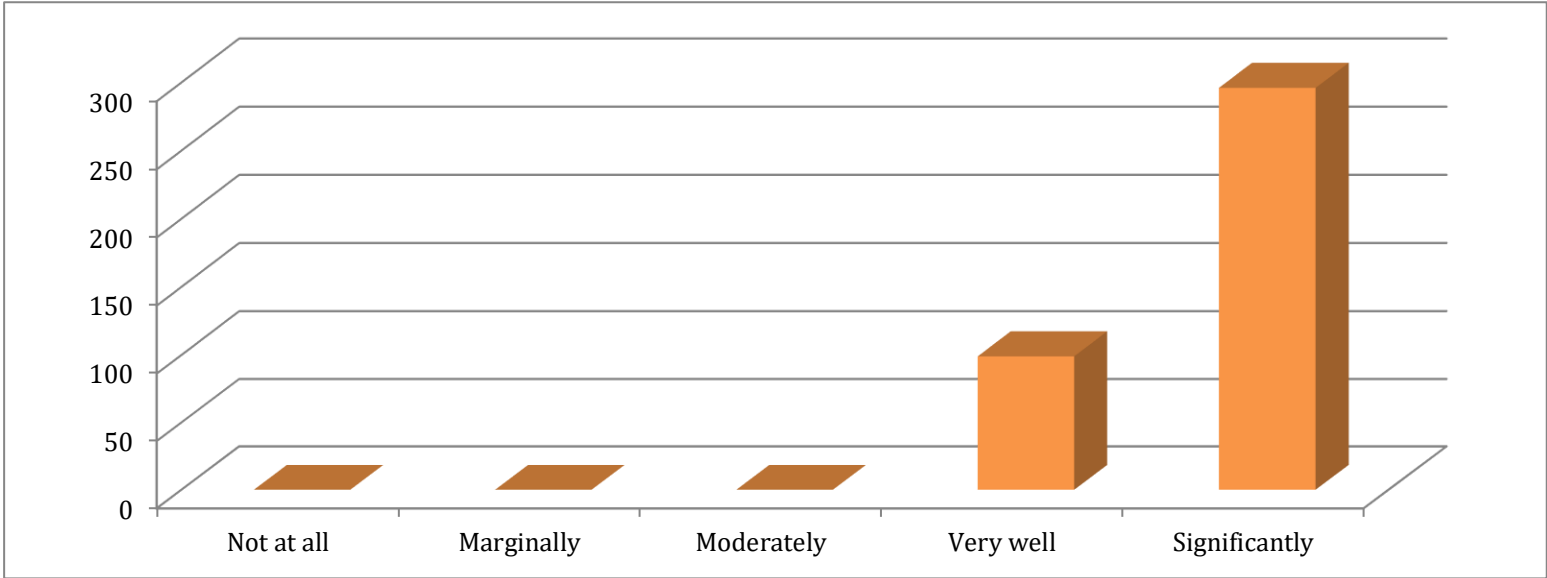


7.The institute takes active interest in promoting internship, student exchange, field visit opportunities for
 Students

Sentiment Level	Responses (a)	Rating Value (b)	Total Score C=(a)* (b)
Never	0	0	0
Rarely	0	1	0
Sometimes	2	2	4
Often	53	3	159
Regularly	52	4	208
Total Responses/Respondents	107		371
		Mean Score	3.4672

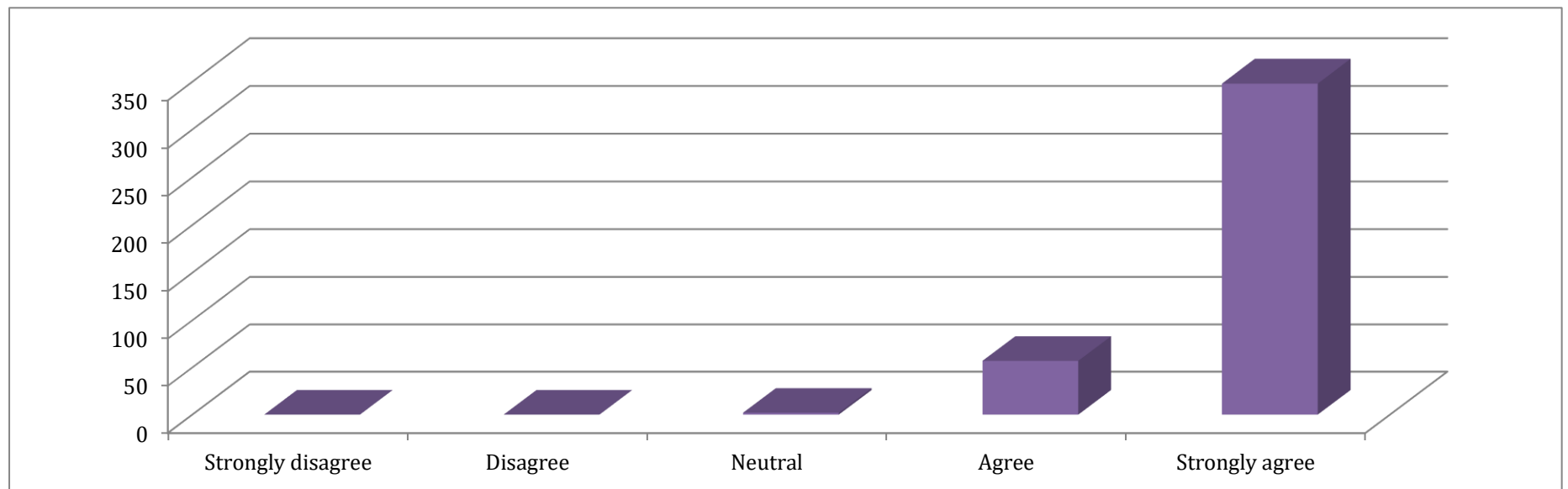


8. The teaching and mentoring process in your institution facilitates you in cognitive, social, and Emotional growth.			
Sentiment Level	Responses (a)	Rating Value (b)	Total Score C=(a)* (b)
Not at all	0	0	0
Marginally	0	1	0
Moderately	0	2	0
Very well	33	3	99
Significantly	74	4	296
Total Responses / Respondents	107		395
Mean Score			3.6915



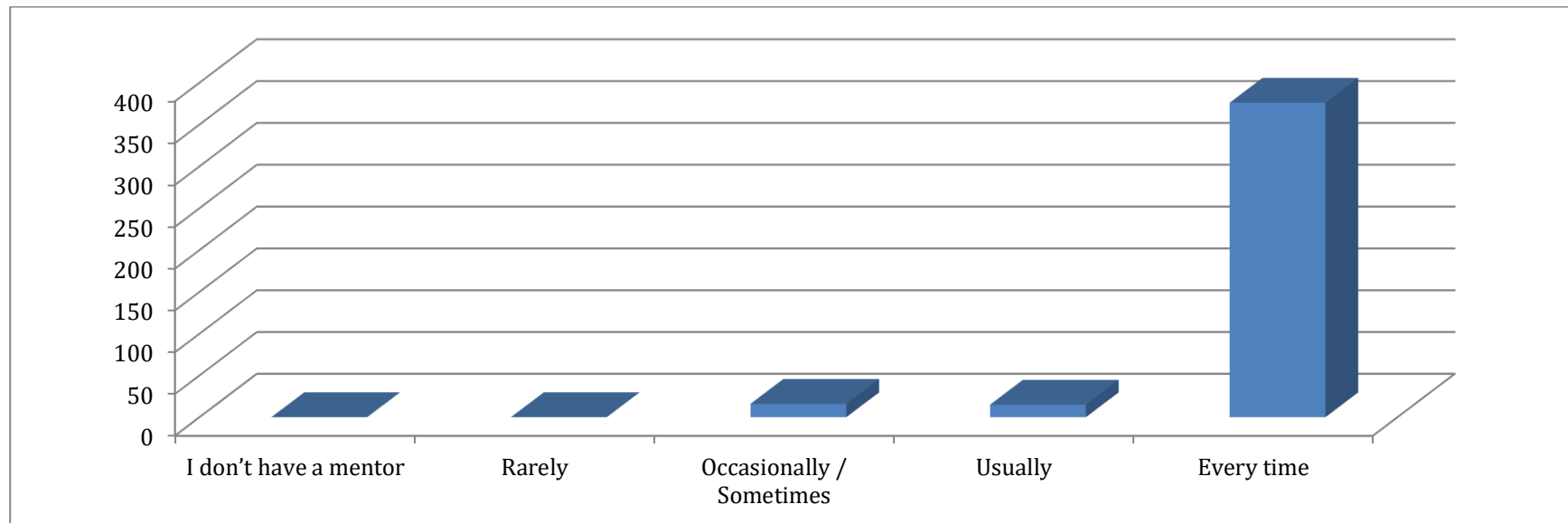
9. The institution provides multiple opportunities to learn and grow.

Sentiment Level	Responses (a)	Rating Value (b)	Total Score C=(a)* (b)
Strongly disagree	0	0	0
Disagree	0	1	0
Neutral	1	2	2
Agree	19	3	57
Strongly agree	87	4	348
Total Responses / Respondents	107		407
Mean Score			3.8037



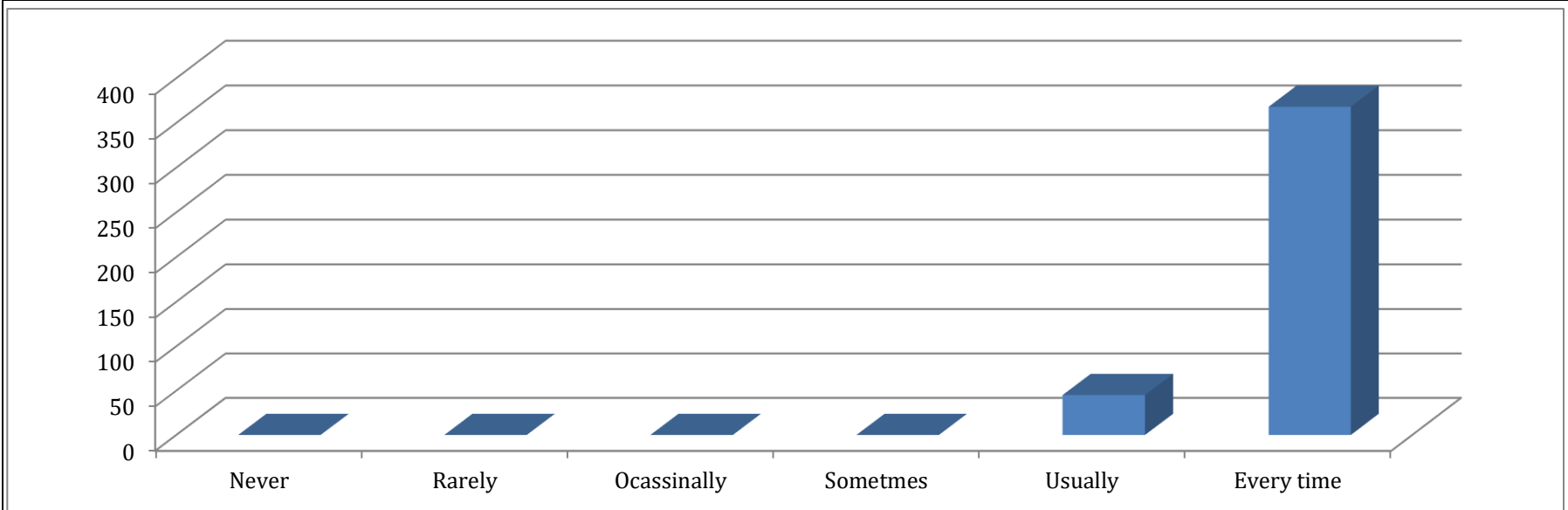
11. Your mentor does a necessary follow-up with an assigned task to you.

Sentiment Level	Responses (a)	Rating Value (b)	Total Score C=(a)* (b)
I don't have a mentor	0	0	0
Rarely	0	1	0
Occasionally / Sometimes	8	2	16
Usually	5	3	15
Every time	94	4	376
Total Responses / Respondents	107		407
Mean Score			3.8037



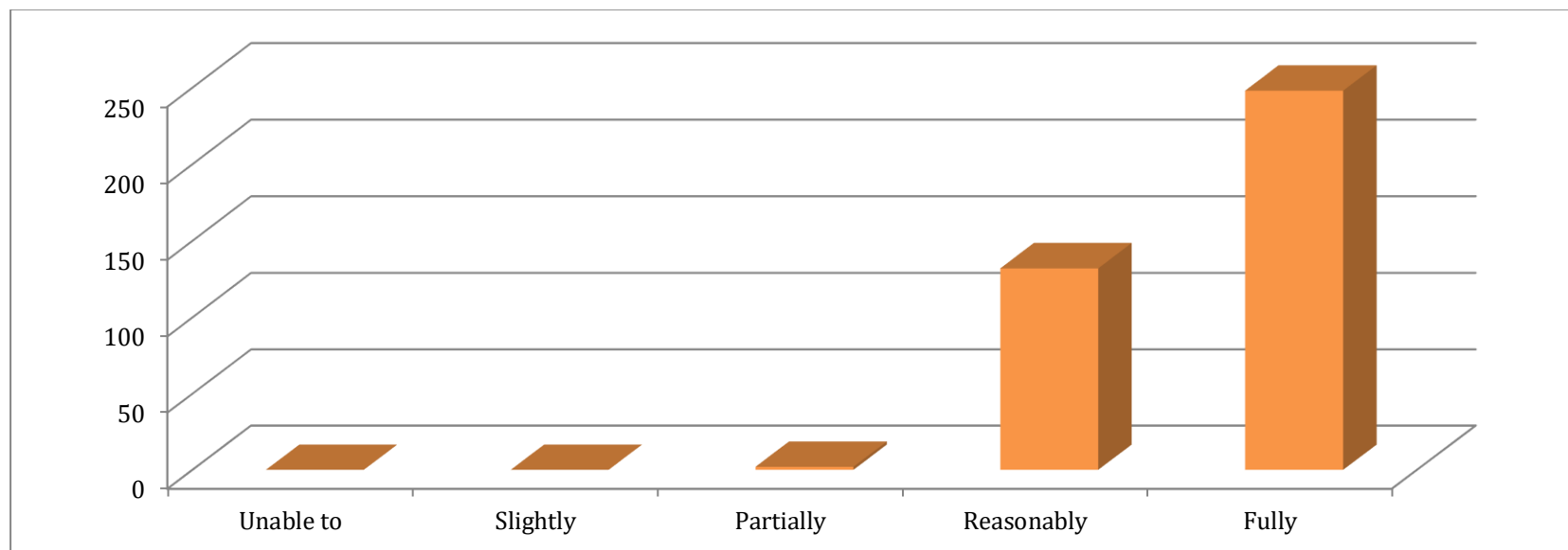
12. The teachers illustrate the concepts through examples and applications.

Sentiment Level	Responses (a)	Rating Value (b)	Total Score C=(a)*(b)
Never	0	0	0
Rarely	0	1	0
Occasionally / Sometimes	0	2	0
Usually	15	3	45
Every time	92	4	368
Total Responses / Respondents	107		413
Mean Score			3.8598



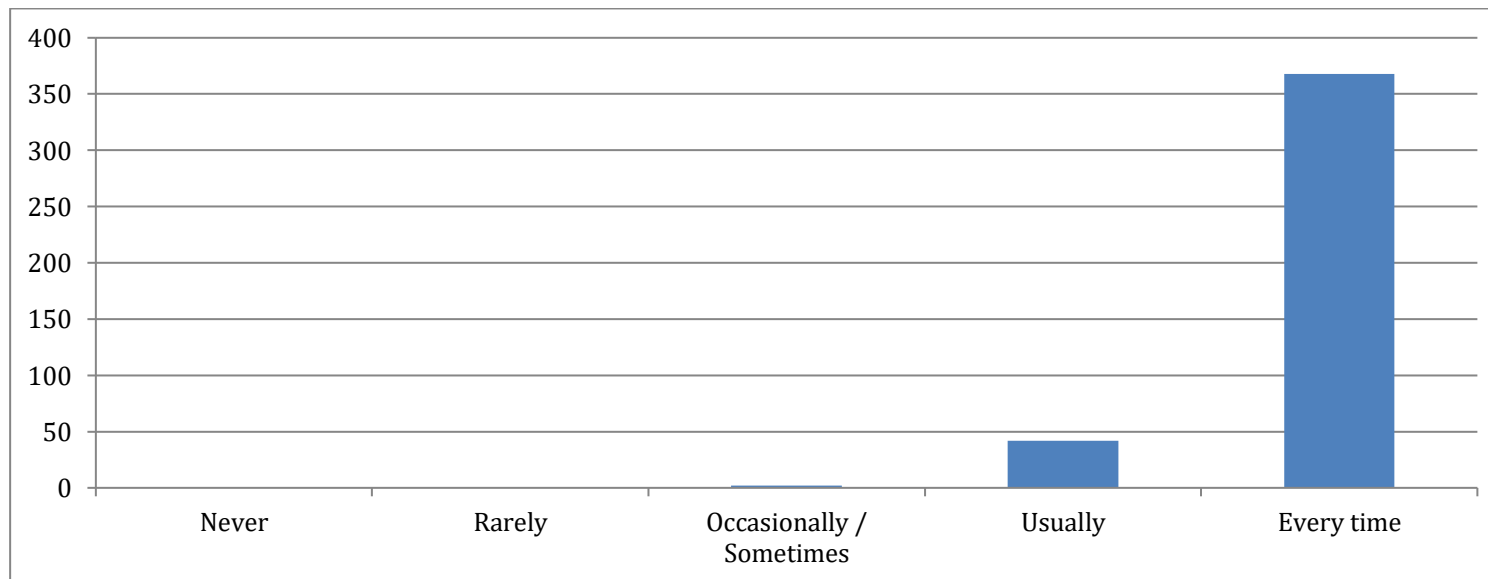
13. The teachers identify your strengths and encourage you with providing right level of challenges.

Sentiment Level	Responses (a)	Rating Value (b)	Total Score C = (a)* (b)
Unable to	0	0	0
Slightly	0	1	0
Partially	1	2	2
Reasonably	44	3	132
Fully	62	4	248
Total Responses / Respondents	107		382
Mean Score			3.5700



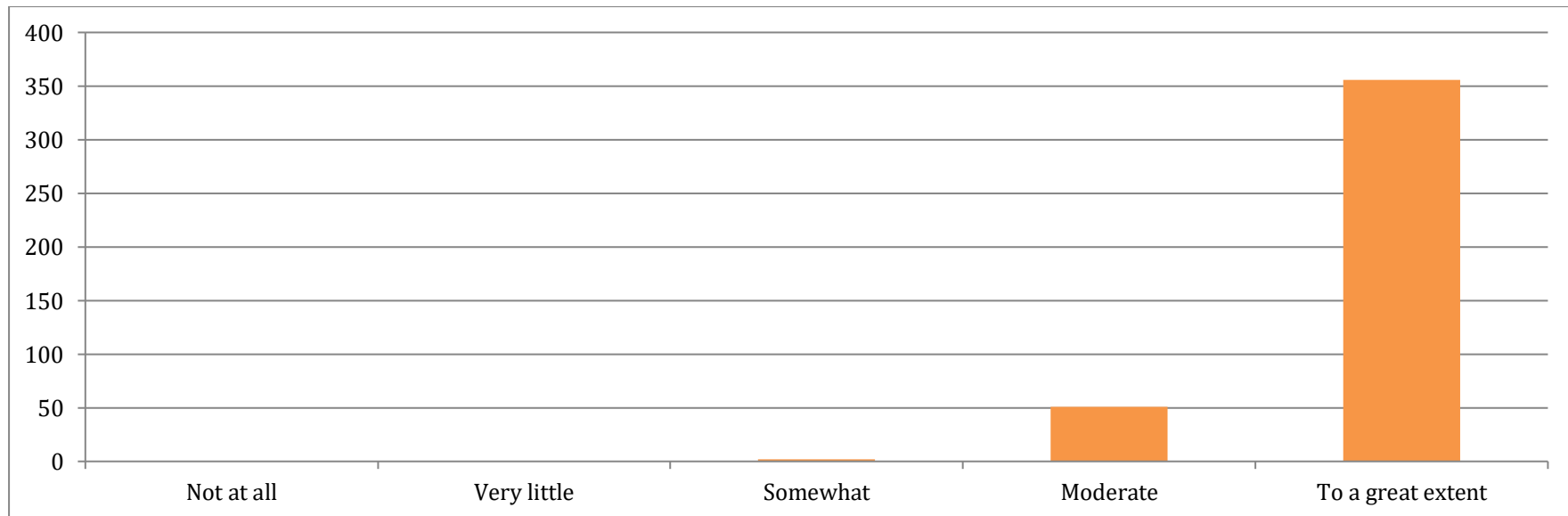
14. Teachers are able to identify your weaknesses and help you to overcome them.

Sentiment Level	Responses (a)	Rating Value (b)	Total Score C=(a)* (b)
Never	0	0	0
Rarely	0	1	0
Occasionally / Sometimes	1	2	2
Usually	14	3	42
Every time	92	4	368
Total Responses / Respondents	107		412
Mean Score			3.8504



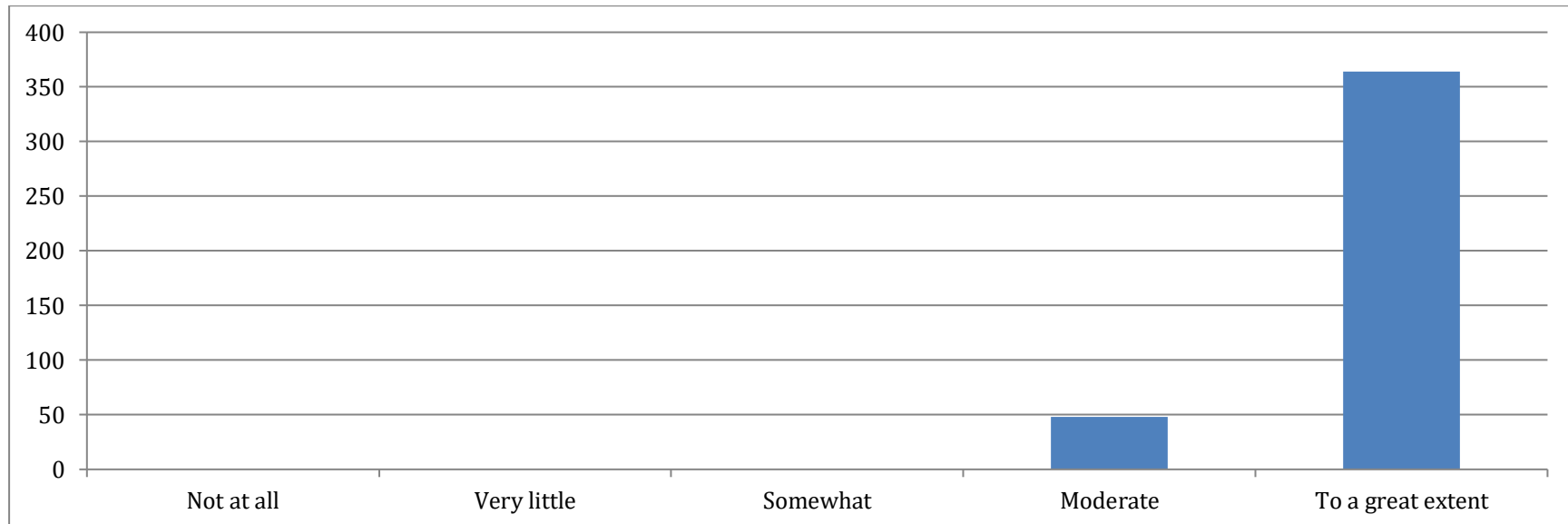
15. The institution makes effort to engage students in the monitoring, review, and continuous quality improvement of the teaching learning process.

Sentiment Level	Responses (a)	Rating Value (b)	Total Score C=(a)*(b)
Strongly disagree	0	0	0
Disagree	0	1	0
Neutral	1	2	2
Agree	17	3	51
Strongly agree	89	4	356
Total Responses / Respondents	107		409
Mean Score			3.8224

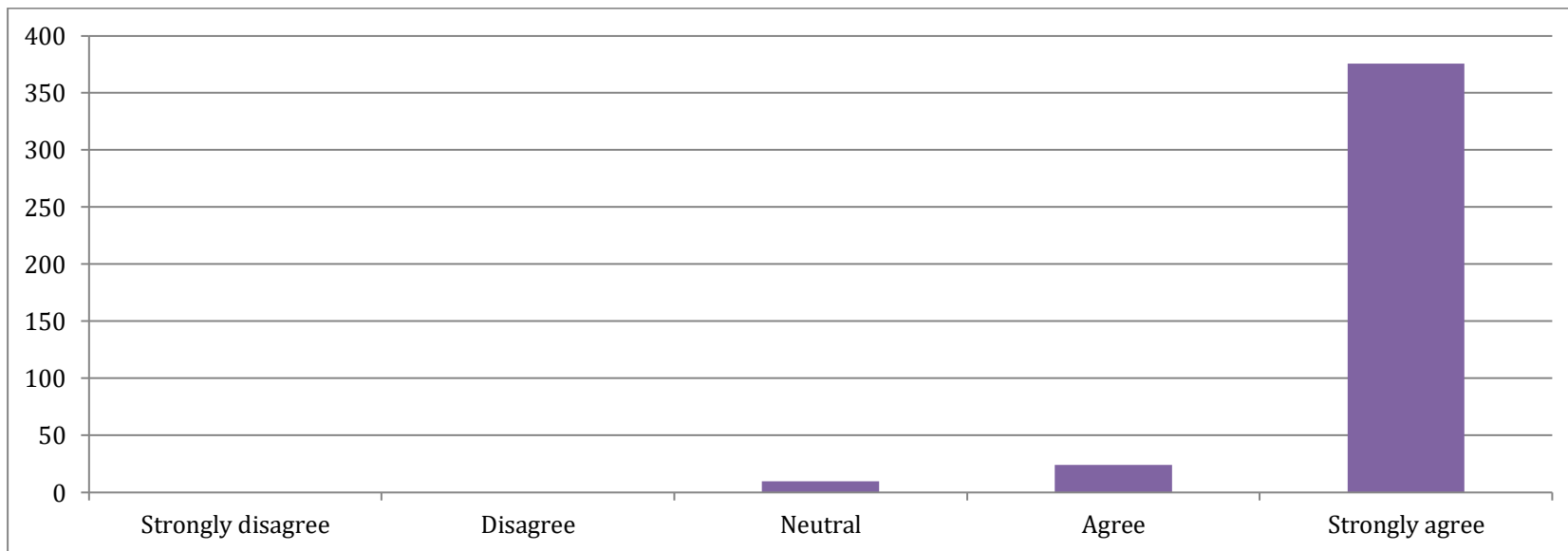


16. The institute / teachers use student centric methods, such as experiential learning, participative learning and problem solving methodologies for enhancing learning experiences.

Sentiment Level	Responses (a)	Rating Value (b)	Total Score C=(a)*(b)
Not at all	0	0	0
Very little	0	1	0
Somewhat	0	2	0
Moderate	16	3	48
To a great extent	91	4	364
Total Responses / Respondents	107		412
Mean Score			3.8504

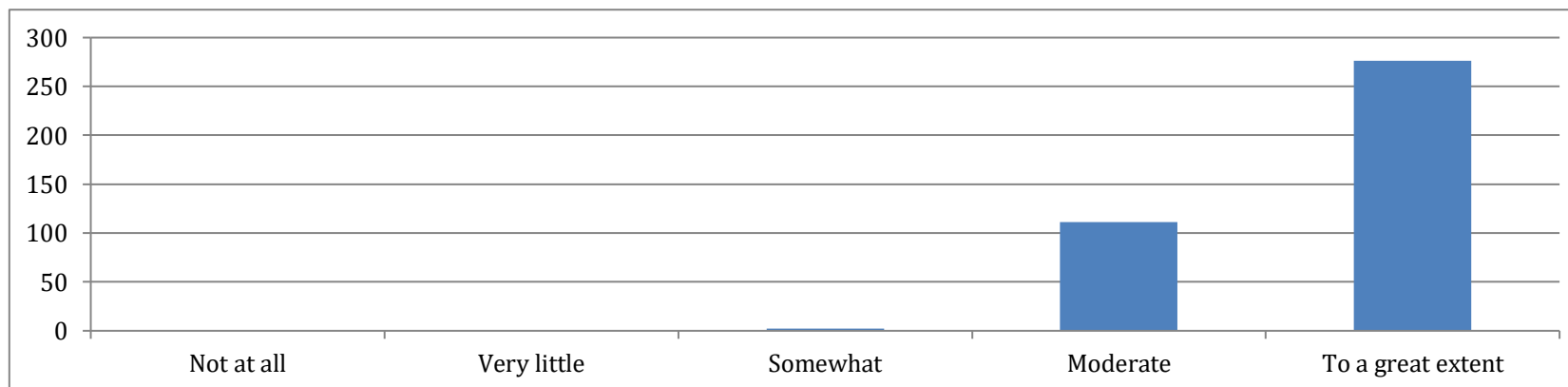


17. Teachers encourage you to participate in extracurricular activities.			
Sentiment Level	Response (a)	Rating Value (b)	Total Score C=(a)*(b)
Strongly disagree	0	0	0
Disagree	0	1	0
Neutral	5	2	10
Agree	8	3	24
Strongly agree	94	4	376
Total Responses / Respondents	107		410
Mean Score			3.8317



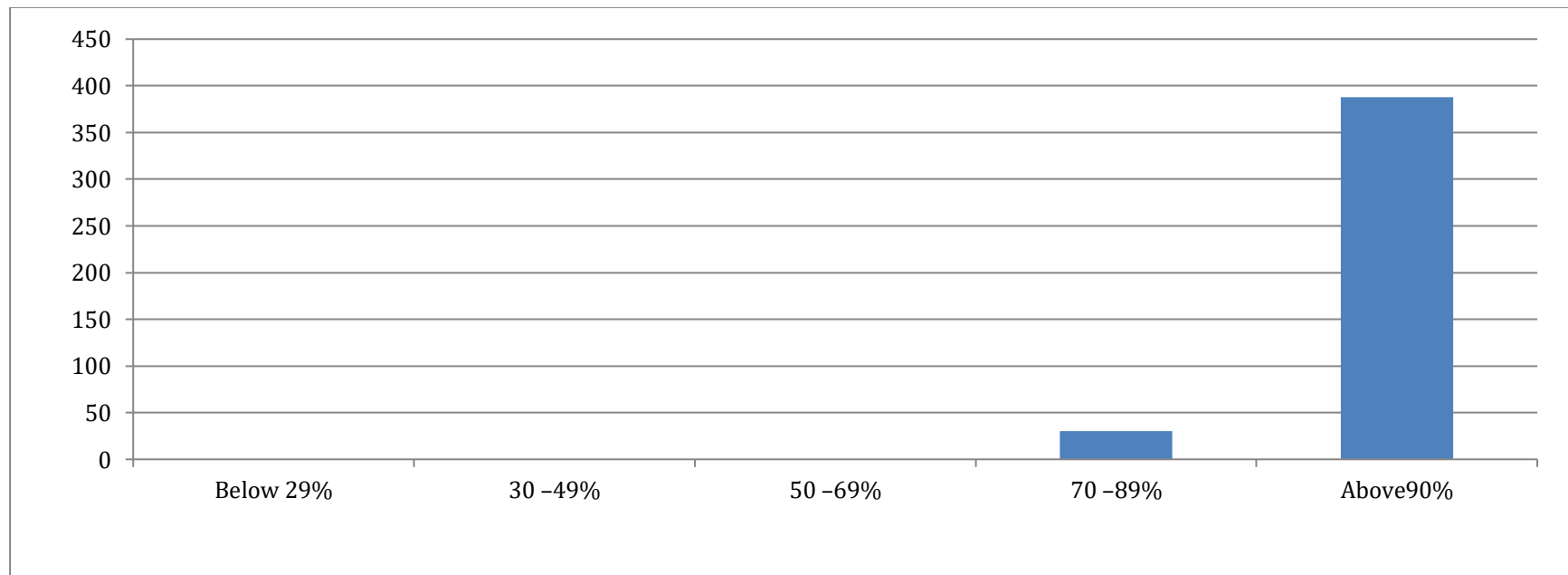
18. Efforts are made by the institute / teachers to inculcate soft skills, life skills and employability skills to make you ready for the world of work.

Sentiment Level	Responses (a)	Rating Value (b)	Total Score C=(a)* (b)
Not at all	0	0	0
Very little	0	1	0
Somewhat	1	2	2
Moderate	37	3	111
To a great extent	69	4	276
Total Responses / Respondents	107		389
Mean Score			3.6355



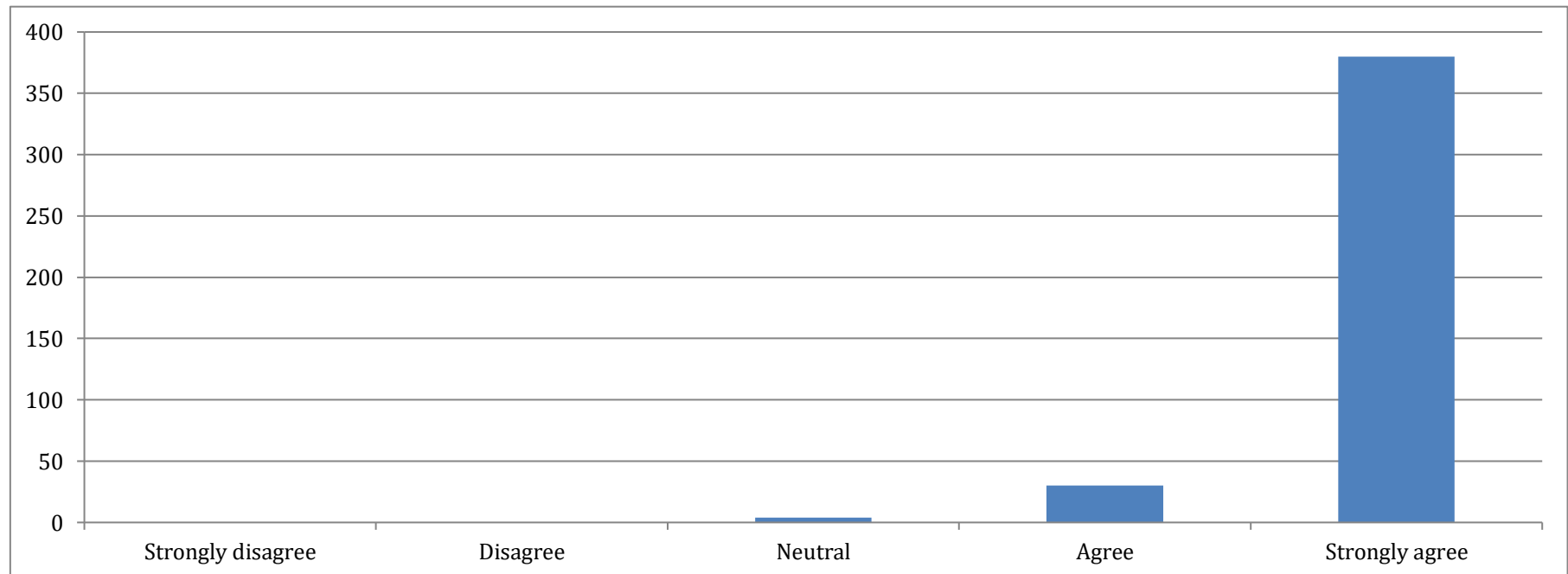
19. What percentage of teachers use ICT tools such as LCD projector, Multimedia, etc. while teaching?

Sentiment Level	Responses (a)	Rating Value (b)	Total Score C=(a)*(b)
Below 29%	0	0	0
30 –49%	0	1	0
50 –69%	0	2	0
70 –89%	10	3	30
Above90%	97	4	388
Total Responses / Respondents	107		418
Mean Score			3.9065



20. The overall quality of teaching-learning process in your institute is very good.

Sentiment Level	Responses (a)	Rating Value (b)	Total Score C=(a)*(b)
Strongly disagree	0	0	0
Disagree	0	1	0
Neutral	2	2	4
Agree	10	3	30
Strongly agree	95	4	380
Total Responses / Respondents	107		414
Mean Score			3.8691



21. Give three observations /suggestions to improve the overall teaching-learning experience in your institution.

S. No	Some of the Observations / Suggestions
1	The quality of teaching is good.
2	The way of communication with students is good about studies.
3	The way of conducting exams is good.
4	Explanation by using PPTs, Digital Boards, Touch screens etc.,
5	Assignments conducted periodically.
6	Seminar by students was conducted in conducive environment.
7	Improve students 'language and communication skills.
8	Provide more campus recruitment
9	Teaching and learning in this college is very well.
10	Better usage of digital classes.
11	ICT tools are not provided Sufficiently.

X. Mahabub Basha
PRINCIPAL
S.M.L.Govt. Degree College
YEMMIGANUR Kurnool (Dist.)